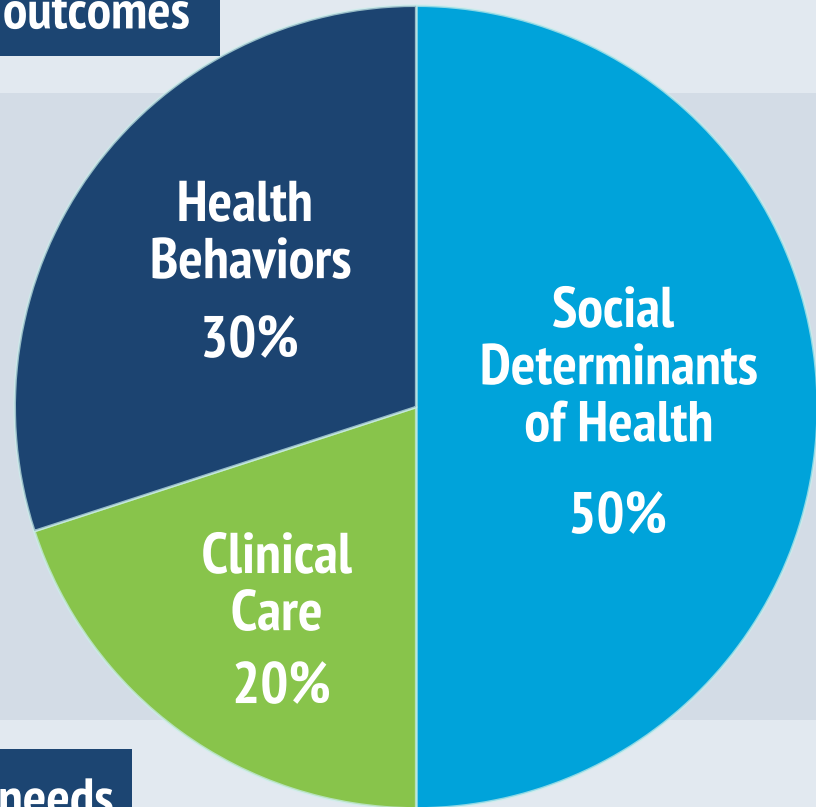




Addressing Social Determinants of Health Can Improve Community Health & Reduce Costs

Social determinants influence 50% of health outcomes

- Economic Stability
- Education
- Social & Community Context
- Health & Health Care
- Housing
- Transportation
- Food Security



Our communities are reporting unmet social needs

Recent survey findings show the prevalence of unmet social needs that impact health care



Addressing determinants can improve health and reduce costs



FOOD INSECURITY

2.4x

more likely to go to the emergency room



TRANSPORTATION NEEDS

2.6x

more likely to go to the emergency room



COMMUNITY SAFETY NEEDS

3.2x

more likely to go to the emergency room

Solutions are already underway to address some determinants



FOOD ENVIRONMENT

school and summer food programs and farmer's market access



HOUSING

healthy home programs and rural housing services



TRANSPORTATION

non-emergency medical transportation, including ride-share programs



EDUCATION

early childhood education and Job Corps



Collaboration is the key to **driving change**

The health sector is incorporating social determinants into programs



MEDICARE REIMBURSEMENT FOR SOCIAL SERVICES



ADDRESSING SOCIAL NEEDS IN PRIMARY CARE